



# PrimaVision Power for CDM

## HID-PV C 150 /S CDM 220-240V 50/60Hz

PrimaVision Power gear is designed for optimal performance of 100 and 150 W CDM lamps – ideal where high-intensity light is key.

### Product data

General Information	
Lamp Type	CDM
Number of Lamps	1 piece/unit
Suitable For Outdoor Use	No
Number of Products on MCB (16A Type B) (Nom)	6
Automatic Restart	Yes
Operating and Electrical	
Input Voltage	220 to 240 V
Input Frequency	50 to 60 Hz
Operating Frequency (Nom)	0.14 kHz
Power Factor 100% Load (Nom)	0.95
Ignition Voltage (Max)	5.0 kV
Ignition Switch-Off Time (Nom)	20 min
Mains Voltage Performance (AC)	-10%+6%
Mains Voltage Safety (AC)	-18%+10%
Earth Leakage Current (Max)	0.35 mA
Inrush Current Width	.50 ms
Constant Wattage Deviation	-3%/+3%
Power Losses (Nom)	10 W

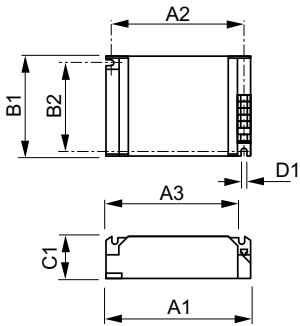
Inrush Current Peak (Max)	50 A
Wiring	
Cable Capacity Output Wires Mutual (Nom)	200 pF
Cable Length From Device to Lamp	2.0 m
Wire Striplength	10.0-11.0 mm
Ballast Contact Wire Cross Section	0.50-2.50 mm <sup>2</sup>
Connector Type	Insert
System characteristics	
Rated Ballast-Lamp Power	150 W
Temperature	
T-Ambient (Max)	60 °C
T-Ambient (Min)	-20 °C
T-Storage (Max)	85 °C
T-Storage (Min)	-25 °C
T-Case Lifetime (Nom)	75 °C
T-Case Maximum (Max)	85 °C

## PrimaVision Power for CDM

Mechanical and Housing	
Housing	/S
Approval and Application	
Active Temperature Protection	Yes
EMI 9 kHz ... 300 MHz	CISPR 15 ed 7.2
Vibration Standard	IEC60068-2-6 F c
Bumps Standard	IEC 60068-2-29 Eb
Approval Marks	F-Marking CE marking VDE certificate VDE-EMV certificate CB Certificate
Hum And Noise Level	Inaudible

Product Data	
Full product code	871150091052330
Order product name	HID-PV C 150 /S CDM 220-240V 50/60Hz
EAN/UPC - Product	8711500910523
Order code	913700614066
Numerator - Quantity Per Pack	1
Numerator - Packs per outer box	12
Material Nr. (12NC)	913700614066
Net Weight (Piece)	0.360 kg

### Dimensional drawing



HID-PV C 150 /S CDM 220-240V 50/60Hz

Product	D1	C1	A1	A2	B1	B2
HID-PV C 150 /S CDM 220-240V 50/60Hz	4.8 mm	32.0 mm	135.0 mm	123.5 mm	75.0 mm	63.5 mm

